



# UPSLOPE

## Newsletter of the PATC Ski Touring Section



Visit Us On the WEB at <http://www.patc.us/chapters/ski/>

June 2008

- Next UPSLOPE is October...
- Planning Meeting, Friday, July 25 at 7 PM. Contact Peggy Alpert.

Plans for Ski Fair,

November 1, 2008

Potential trips for signup

### 2007-2008 Ski Season Roundup Après Ski Party

The official 2007-2008 PATC-STS ski season ended with a bang at the Après Ski Party on May 4th at the stately home of member Catherine Payne, high above the Potomac in McLean, Virginia. Some 25 plus loyal STSers assembled to grill meat, sample assorted pot luck salads, appetizers, desserts, drinks and other nosh, and also chew over the season's many successful ski trips.



Not of least interest were discussions of what we ought to do NEXT season. We elected a brace of new Trip Coordinators (see below) and hatched plans for many great trips, including some new venues. Minutes of the meeting are on [page 3](#).

Inside this issue:

(green links are live)

<i>Your STS Officers Contacts Chairman's Column</i>	2
<i>Après Ski Minutes Planning and Social Meeting.</i>	3
<i>Treasurer's Report</i>	5
<i>STS Membership Re- port—STS sustains net loss of 20 member— Global Warming to Blame?</i>	6
<i>New STS Membership Brochure—pass it on to a friend</i>	7-8

### TRIPS ARE COMING, SO WATCH YOUR FALL



We are the new trip coordinators and are eager to organize some great trips this winter! The STS officers and trip coordinators are meeting on Friday, July 25 at 7 PM. If you are interested in leading a trip or helping with a club activity, please contact Peggy Alpert (see [page 2](#)) for details of the planning meeting. We will plan trips for this season and our goal this year is to find accommodations that have a generous cancellation policy if there is no snow.

We've already made reservations in the Thomas, WV area, at a hotel with a 72 hour policy. As in previous years we will plan trips in Laurel Highlands, PA, including the Learn to Ski weekend. Several trips to the north and west where the snow is predictable will also be scheduled. Previous trip leaders have indicated that they will lead trips again and we are looking for others who may be interested. For their time and effort, leaders get free accommodations. For more information please attend the July 25th meeting or call us. The Ski Fair will take place on November 1 at PATC HQ, Vienna, VA. We hope to see you there!

Kathy Brumberger and Steve Bergstrom

STS Officers

From The STS Chair

**Chair**

Peggy Alpert  
 H: 301-946-4497  
[mountainmama15@verizon.net](mailto:mountainmama15@verizon.net)

**Vice-Chair**

Bert Finkelstein  
 H: 703-715-8534  
[bertanamo@gmail.com](mailto:bertanamo@gmail.com)

**Secretary**

Al Larsen  
 H: 703-807-1639  
[alarsen120@aol.com](mailto:alarsen120@aol.com)

**Treasurer**

Robert Swennes  
 H: 703/532-6101  
[robertswennes@hotmail.com](mailto:robertswennes@hotmail.com)

**Trip Coordinators**

Steve Bergstrom  
 H: 301-564-9696  
[skifisc1@yahoo.com](mailto:skifisc1@yahoo.com)  
 Kathy Brumberger  
 H: 301-774-7412  
[kathybrum@verizon.net](mailto:kathybrum@verizon.net)

**Webmaster**

Steve Brickel  
 H: 301-946-2520  
[sbrickel3003@rcn.com](mailto:sbrickel3003@rcn.com)

**Membership Coordinator**

Douglas Lesar  
 H: 301-587-8041  
[dlesar@comcast.net](mailto:dlesar@comcast.net)

**UPSLOPE Editor**

Ralph Heimlich  
 H: 301-498-0918  
[heimlichfamily@comcast.net](mailto:heimlichfamily@comcast.net)

**UPSLOPE**

**Mailing Coordinator**

Randy Kerr  
 H: 703-937-3920  
[lerrkerr@aol.com](mailto:lerrkerr@aol.com)

**PATC Liaison**

Steve Bergstrom  
 H: 301-564-9696  
[skifisc1@yahoo.com](mailto:skifisc1@yahoo.com)

I hope that you are all snuggled down for a long summer's nap. I will awaken at the first snow flake! (I may be in for a longggggg sleep if the weather does not improve.)

And in preparation for those flakes, the best thing we can do during these hot months is to plan for our winter trips. WE NEED TRIP LEADERS! Take this time to imagine the best places you would like to ski. Go to [www.xcski.org](http://www.xcski.org). That site has some good ideas. Speak with our trip coordinators, Steve Bergstrom and Kathy Brumberger.

As the lead story indicates, we had our annual Après Ski party and business meeting at the home of Katherine Payne, in McLean, Virginia. Many people attended; officers were elected; delicious food was eaten; and pictures from the Winter Ski trips were shared. See the story and the Business Meeting Minutes on [page 3](#).

While I'm on the topic of trips, don't forget to renew your membership in STS. Also if you plan on leading a trip or participating in a trip outside of Pennsylvania, Virginia or West Virginia, you need to be a member of our parent club, the Potomac Appalachian Trail Club (PATC).

One of the items we discussed at the Après Ski meeting was the need for publicity. To this end we have updated our brochure that Steve Brickel originally issued about 6 years ago. Needed is a publicity person (or committee) to find venues to distribute the brochure and trip lists. Eliot Brumberger has offered to contact the sports calendar section of the *Washington Post* with information about our trips.

If you are interested in leading a trip or helping with an activity, please attend the Planning Meeting on Friday, July 25 at 7 PM. Contact me for details.

Again I thank ALL the people who help with the operation of this Club, which is all about TRIPS. Please be one of these volunteers, on the trails or behind the scenes.



Yours in Snow,  
 Peggy

**Did You Know That Electronic Upslope...**

- ⇒ Saves STS money, time, and labor—Each edition costs nearly \$1 to copy and mail—That's nearly \$1,800 per year, our largest club expense
- ⇒ Saves the environment, paper, ink and energy,
- ⇒ Shows your photos and illustrations in **COLOR**,
- ⇒ Lets you access UPSLOPE on the web page or on your home computer to refer to long after you would have trashed your paper copy,
- ⇒ Links to our website and others and "clickable" internal navigation

How electronic UPSLOPE works: Those indicating "electronic only" receive an email with a link to the new edition each time it is posted. An archive of past editions is maintained on the website. To start getting e-delivery of an Adobe .pdf file newsletter, email me at [heimlichfamily@comcast.net](mailto:heimlichfamily@comcast.net) that you want to "go electronic"!

Ralph Heimlich, UPSLOPE Editor

## Minutes of PATC/STS Annual Business Meeting, Apres' Ski Party May 4, 2008

The meeting was called to order at 4:30 PM at the home of Catherine Payne in McLean, VA. Someone was confused and thought this meant it was time to call in their order, but that opening gambit was successfully parried and the meeting proceeded.

1. For the welcome, STS Chair Peggy Alpert said "Welcome". The writing of it has hereby taken longer than the doing of it.
2. Acceptance of Minutes of the previous Annual Business Meeting (May 5, 2007). The assembled membership (and two of Catherine's cats) voted to approve last year's minutes.
3. Treasurer's Report—As has now become his custom (resulting in his annually being re-elected), STS Treasurer Rob Swennes presented a complete, comprehensive and documented Treasurer's Report (see [page 5](#)). Highlights include the fact that actual income over expenses created a slight excess (\$204), indicating that the club is successfully recovering the costs of its various and sundry activities, but not building fat into the charges imposed. Also noteworthy is that total expenses were over budget—but that was simply because certain ski trips were run through the club account rather than being netted out by the trip leader before hand. Thus, revenues were over budget by the same amount as expenses, with no net impact on club finances.
4. Membership Report—Actually, the membership did not report. It sat there passively while Doug Lesar reported about the membership. Through a variety of advanced quantitative methods and statistical analyses, including regression analysis (what else would suffice to chart the direction of our "special" group), Doug showed that the slow bleed of total membership size continues. At the end of the year, we were down 20 members from last year's total, from 278 to 258. Someone argued that we were making up in quality what we were losing in quantity, but that was met with "yeah, yeah", "says you" and "is it time to eat yet".

Doug also noted that not quite half of members receive the UPSLOPE newsletter electronically. The hard copy U.S. Postal mail distribution does cost the club substantially more and uses natural resources—so we urge anyone who can to choose electronic distribution.

5. Trip Coordinator's Report—Al Larsen noted that once again, it was a very tough (as in, hardly any) snow year in the Mid-Atlantic region. To a group whose whole reason for being is to get out skiing, this was, surprisingly, not totally new information. Al thanked the trip leaders, whom he pointed to as the heart and soul of the STS program—making possible the ski outings themselves. He raised some questions for the group to ponder and discuss later in the meeting, regarding the kinds and locations of trips to be planned for the upcoming season.
6. Election of Officers—In an election that would have made the old Soviet leaders proud, existing Chair Peggy presented a slate of candidates for offices and asked for approval. Hearing a "yeah, sure" from the back of the room, Peggy declared the following results:

Chair—Peggy Alpert

Vice Chair—Bert Finklestein

Treasurer—Rob Swennes

Secretary—Al Larsen

Other appointed positions were approved as follows:

Trip Coordinators—Steve Bergstrom and Kathy Brumberger

Membership Coordinator—Doug Lesar

UPSLOPE editor—Ralph Heimlich

Mailing Coordinator—Randy Kerr

Webmaster—Steve Brickel

The group discussed the need and desirability for people to serve in two other capacities:

Publicity Coordinator

PATC liaison

*(Continued on page 4)*

## Business Meeting Minutes (continued)

(Continued from page 3)

No one was appointed to these roles at the meeting, but the officers solicit and would welcome those who want to serve the STS to step forward to volunteer. [Editor's Note: Steve Bergstrom will continue PATC Liaison duty.]

### 8. New Business

a. Insurance Issues—Peggy presented a number of concerns regarding insurance coverage for STS trips. In the end, there were more questions than answers, with Peggy soliciting information from members if they have any. Several members believed, although no one could confirm, that PATC insures STS trip leaders for negligence claims coming from club trips. After an inquiry this past season, it now appears that, whatever coverage PATC does have, its carrier will not cover STS. It is not clear whether they were basing that on a misconception that STS was a downhill skiing club, or whether they would reject coverage even if they understood perfectly the nature of our outings.

Peggy stated that based on the latest information she had received from PATC, there may be one insurer who would insure STS for our 4 month per year season for about \$600. Peggy noted two things that are certain:

1. Participants in STS trips outside of the PATC area (PA, VA, MD, WV, DC) must be members of the PATC
2. All trip leaders, regardless of location of trip, must be PATC members

b. Location of Trips for 2008-09 Season—Suggestions from the group discussion:

- recruit leaders for more out-of-region trips, where availability of snow is more likely
- local trips—schedule such trips, but try to set them up with cancellation rights in the event there is insufficient snow.

Kathy Brumberger will check on such lodging availability in the Canaan/Blackwater area

--Backbone Ski Farm (Garrett County, MD). Cancelled this past year because of no snow. We want to schedule a trip there next year, but need an STS trip leader, who would then contact Max to arrange for use of facilities, guided outing, etc.

--Tentative trips for next season:

Rob Swennes—New Hampshire (Bear Notch area); will be driving from DC, not flying up

Rob Swennes—Yellowstone, in February

Peggy Alpert and Steve Brickel—probably Vermont in February

c. Publicity—Peggy raised the need for additional publicity for club activities. The group agreed that at least some of what goes on in STS should not simply stay within STS (no not the face-plants and not the who-snores discoveries; those can and will remain mostly confidential). But, some information should be publicized beyond our own insular organs (i.e., beyond the UPSLOPE, the website and the listserv). This would include bringing back to life our STS brochure (in need of revision) and finding venues to advertise the existence of STS and its trip schedules. Ralph Heimlich volunteered to do the formatting, graphics and printing of the brochures as soon as he received the text from Peggy. [Editor's Note: The new brochure is drafted and attached to this newsletter—Pass it to a friend who might want to join.]

There was consensus that publicity about Ski Fair in the Fall should go to a wider audience, using media such as the *Washington Post* outdoor column, bulletin boards at outdoor stores, college outing clubs, etc. Everyone enthusiastically agreed with this proposition. No one enthusiastically stepped forward to actually DO all the work (except for Eliot Brumberger who will contact the *WashPost* in the Fall). Your secretary therefore unilaterally has implemented a system of randomly selecting one person from among everyone who signs up for a trip next season to take on this task. Just kidding—but, got your attention, ain't not?

Peggy invited anyone who is interested in helping with some or part of the publicity task to contact her.

With that, by voice vote with no dissent, the assembled multitude ended the business meeting around 5:30 and began the eating, drinking, conversation and slide show of past season's trips (except for that far corner of the room which had previously commenced with the drinking and conversation part of the program despite what the agenda showed).

Respectfully submitted,

Al Larsen

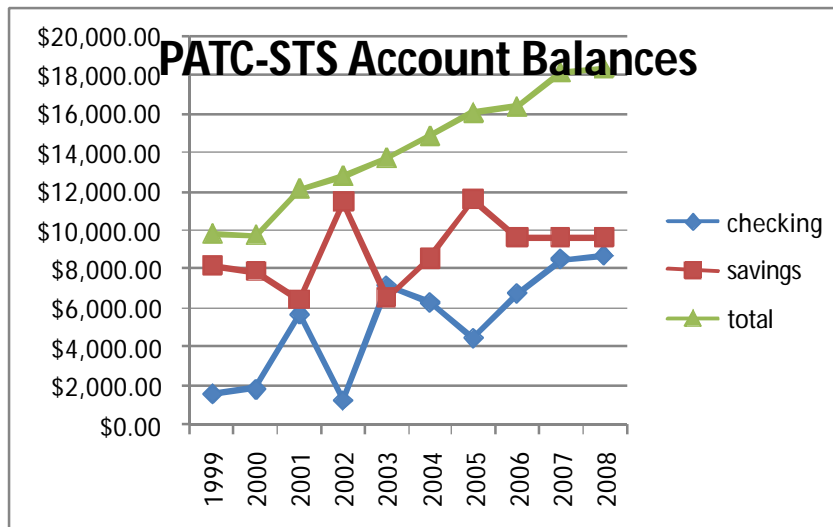
Secretary

### Treasurer's Report 2008

**POTOMAC APPALACHIAN TRAIL CLUB SKI TOURING SECTION**  
 Treasurer's Report: May 4, 2008 (Reflecting accounts as of April 1, 2008)

	Actual Income/ Expenses 2007 - 2008	Approved Budget 2007-2008	Proposed Budget 2008-2009
<b>REVENUES</b>			
Memberships	\$1,555	\$2,000	\$1,700
Trip Revenues 1/	7,612	4,000	4,000
Miscellaneous Revenues	0	0	0
Savings Account Interest	24	25	25
<b>Total Revenues</b>	<b>\$9,191</b>	<b>\$6,025</b>	<b>\$5,725</b>
<b>EXPENSES</b>			
UPSLOPE: Copying	\$285	\$300	\$300
Postage	197	300	300
Volunteer work expenses (trail clearing, etc.)	287	400	300
Ski Fair	208	200	230
Computer Equipment	335	0	0
Admin. Expenses (including meeting food, advertising, membership)	192	700	400
Trip Expenses 1/	7,483	4,000	4,000
<b>Total Expenses</b>	<b>\$8,987</b>	<b>\$5,900</b>	<b>\$5,530</b>
<b>NET REVENUE/(DEFICIT)</b>	<b>\$204</b>	<b>\$125</b>	<b>\$193</b>

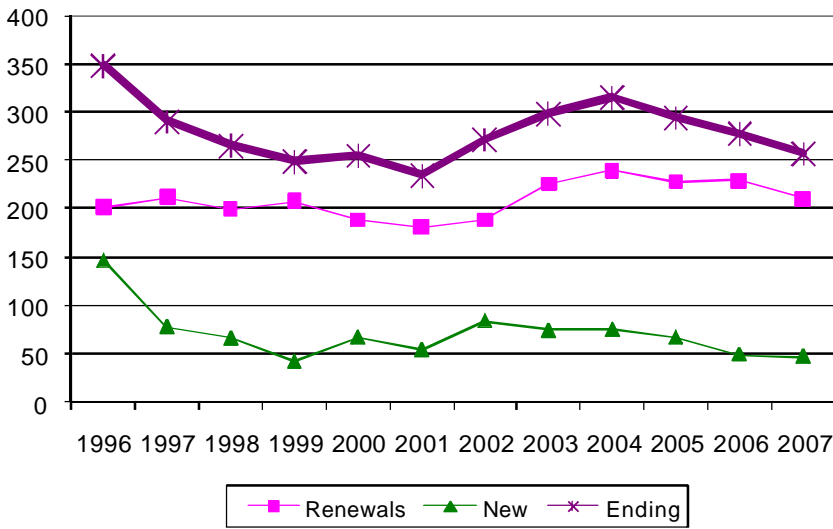
1/ Account includes \$4,800 in revenue and paid \$5,265 in expenses for the Quebec trip. A \$700 deposit should still be held for us at the Elk River Touring Center, WV re cancelled trip for Jan. 7-10, 2005. Deposit may still apply to a future trip



Rob Swennes  
Treasurer

## STS Membership Status May 2008

**PATC-STS Membership Trends**



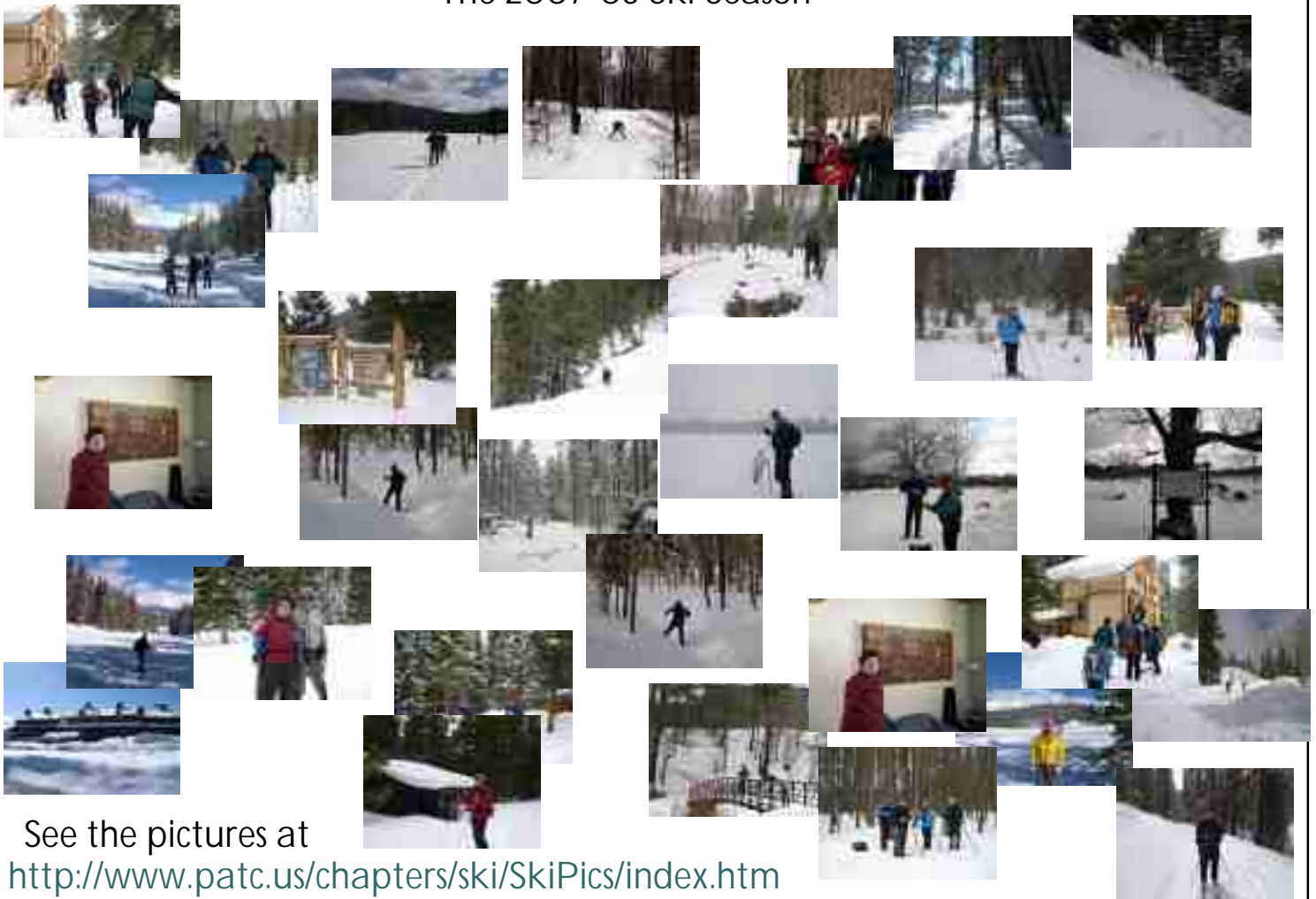
*By Doug Lesar, Membership Coordinator*

STS continued its membership decline in 2007, reflecting the less-than-perfect cross-country skiing season. The group suffered a net loss of 20 people over the course of the past year, dropping from 278 to 258 individuals. We are down 57 members from the recent high of 315 in 2004 and 91 members from the all time high of 349 in 1996. Given that local Nordic skiing was quite limited (unless you could jump into your car at a moment's notice and head to Canaan Valley before the chronic post-snowfall warm temps and rain hit), this change is not at all bad!

The multiyear membership options remain popular, with about 32 percent of the membership currently being on two or three year cycles. Almost all new members request to be enrolled in our group e-mail list. Finally, 123 of 258 members now receive their newsletters electronically, saving Randy Kerr from much mailing work (and club expense). I am hoping

that STS can regain a membership level of at least 300 people in the next ski season. I ask all members to spread word of the club by personal testimony and recommendation, and use the enclosed brochure to entice a friend to join our ski club.

## The 2007-08 Ski Season



See the pictures at  
<http://www.patc.us/chapters/ski/SkiPics/index.htm>

Fill out the application below and send it to Doug at the address indicated.

**Dues:**

- 1 year: \_\_\_ \$9 for individual \_\_\_ \$13 for couples
- 2 years: \_\_\_ \$17 for individual \_\_\_ \$24 for couples
- 3 years: \_\_\_ \$25 for individual \_\_\_ \$35 for couples

Membership entitles you to **Upslope**, the STS newsletter, and discounts on trips. Membership begins in October and runs through the following September. If you join after April, your membership is valid through September of the following year.

Send a check for your dues, payable to **PATC-STS**, with this completed application form to:

**Doug Lesar (STS Membership)**  
2507 Campbell Place  
Kensington, MD 20895 Please write clearly

Name(s): \_\_\_\_\_

Address: \_\_\_\_\_

City: \_\_\_\_\_

State: \_\_\_\_\_ Zip Code: \_\_\_\_\_

Phone Number: \_\_\_\_\_

\_\_\_\_\_

This is a (circle): Home Work Cell

Email: \_\_\_\_\_

Please add me to the STS electronic mailing list (LISTSERV) yes \_\_\_ no \_\_\_

Please send my copy of UPSLOPE, the STS newsletter by email yes \_\_\_ no \_\_\_

mail to:

PATC-STS  
Doug Lesar (STS Membership)  
2507 Campbell Place  
Kensington, MD 20895

# PATC

## Cross Country Ski Touring Section

Providing ski touring opportunities for all skier levels



<http://www.patc.us/chapter/s/ski/>

# PATC - STS

The Ski Touring Section (STS) is part of the Potomac Appalachian Trail Club (PATC). Operating since 1974, STS has introduced Washington-area residents to cross-country skiing and provided cross-country ski opportunities for all levels of skiers.

If you:

- ◆ love outdoor activity
- ◆ respect and enjoy our forests and trails
- ◆ are energetic
- ◆ have a cooperative spirit

then you should join PATC's Ski Touring Section.

**We offer:**

- ◆ **Organized trips** to the snow, far and near.
- ◆ **Instruction** on learn-to-ski trips and at ski touring centers at our trip locations.
- ◆ **UPSLOPE, our newsletter.**
- ◆ A **LISTSERVER** communicating information electronically to the cross-country skier community about impromptu ski trips, gear, shopping tips, etc.
- ◆ Meetings, socials, and other **events.**
- ◆ Opportunities to lead trips and help run STS
- ◆ Spirited camaraderie of an eclectic group of snowy-weather enthusiasts.



PATC-STS on the trail

## Trips are the heart of our group

- ◆ We organize one to three ski trips each weekend from late December through early March. The schedule is announced in the STS Upslope, and the PATC and STS web sites.
- ◆ Lodging is arranged by trip leaders, at motels, cabins, camps, or lodges close to ski trails. Room mates are by mutual consent.
- ◆ Participants may carpool to most skiing locations. Trip leaders will facilitate arrangements for carpools.
- ◆ Longer weekend trips are organized on 3- and 4-day holidays.
- ◆ **STS** special interest trips include Learn-to-Ski weekends, Telemark Clinics, and Ski-Dance weekends.
- ◆ Our trip destinations include nearby mountains and highlands in Maryland, West Virginia and Pennsylvania. Longer trips travel to New York's Tug Hill and Adirondacks, New England, Utah, Yellowstone and Bryce National Parks, Quebec and Europe.
- ◆ Our **LISTSERV** and telephone directory make arranging impromptu trips a snap when unexpected snow comes to nearby areas.

## LISTSERVER

This is a convenient electronic message system. If you subscribe, your email address will not be revealed to the recipients of the message you send or to those who send messages to you. This forum helps arrange for impromptu ski trips, share information about ski equipment, tips on travel, and other topics related to cross-country ski touring and other Nordic sports like Telemark and Radonee.

## UPSLOPE

Our newsletter is published monthly in the ski season, informing STS members about scheduled trips, news, and activities. STS members share reports of exciting ski trips, routes, techniques, and pictures of cross-country skiing. UPSLOPE is distributed electronically in color, or by U.S. mail.



Out in the BIG snow

<http://www.patc.us/chapters/ski/>

The PATC-STS web site has comprehensive information about the Club. The STS Ski Trip Schedule trip leader contacts, is posted during the winter. Photos, places to ski, and general info about cross-country skiing in the Washington area is easily accessible on our site.



PATC-Ski Touring Section  
 c/o Doug Lesar  
 2507 Campbell Place  
 Kensington, MD 20895

June 2008

To:



## PATC Ski Touring Section Membership Form

*The PATC/STS provides quality services and benefits to its cross-country skiing members while promoting and supporting the PATC and cross country skiing in general. Whether a novice, recreational, citizen racer or telemark skier, STS has something for every XC skier. Imagine yourself floating on the snow, climbing across hill and dale in the quiet of winter, stopping for lunch in brilliant sunshine on a vista with a view of snow-covered ridges and valleys stretching to the horizon, and then making a descent back to home. Our membership enjoys ski touring in the hills with the comradeship and safety of a group. When you become a member, you receive all issues of the club's newsletter UPSLOPE and other useful information. UPSLOPE is published six times a year by PATC/Ski Touring Section, a non-profit, educational and recreational group of cross-country skiing enthusiasts based in the Maryland, DC, Virginia, PA and West Virginia areas. UPSLOPE provides information about STS trips and events (e.g., Learn-To-XC-Ski weekends, Telemark instructional clinics, and mini-week ski trips). One year membership runs from October 1st through September 30th of the next year. If you join in April or later, your one year membership will run through September of the next year. To insure uninterrupted membership for more than one year, you may provide advance dues for up to three years. To join, select your desired membership category and term from the table below, complete this Form legibly, and send it with a check appropriate to your membership choice (payable to PATC Ski Touring Section) to:*

PATC-Ski Touring Section, c/o Doug Lesar, 2507 Campbell Place, Kensington, MD 20895

### Membership Classes

Membership Categories	1 Year Only	2 Years	3 Years
Individual	\$ 9	\$17	\$25
Family	\$13	\$24	\$35

**PLEASE PRINT or TYPE THE INFORMATION BELOW !!!**

Name(s): \_\_\_\_\_ Request is for: - NEW Membership: \_\_\_\_\_

Address: \_\_\_\_\_ Today's Date: \_\_\_\_\_ - New Address: \_\_\_\_\_

City: \_\_\_\_\_ State: \_\_\_\_\_ Zip: \_\_\_\_\_ - Renewal: \_\_\_\_\_

Home Phone: \_\_\_\_\_ Work Phone: \_\_\_\_\_ Email Address: \_\_\_\_\_

Add me to Annual member directory but do not list my: Home Ph.: \_\_ ; Work Ph: \_\_ ; Email: \_\_; Postal Address: \_\_

If checked, add me to STS LISTServ so I can get infrequent, adhoc announcements of local XC Ski activities: \_\_\_\_\_

If checked, add me to STS Bulk Email list so I get official club announcements important to all STS members: \_\_\_\_\_

*NEW:* If checked, send my UPSLOPE only electronically (no paper copy) to save the club copying and postage: \_\_\_\_\_

STS is an all-volunteer organization. We cannot function without the assistance of our members. If you are interested in volunteering to help STS in any of the following areas, please check the box and you will be contacted:

STS Officer \_\_\_\_\_ Publicity \_\_\_\_\_ XC Ski Instructor \_\_\_\_\_ Web Assistant \_\_\_\_\_ Ski Trip Leader \_\_\_\_\_ Special Events Coordinator \_\_\_\_\_